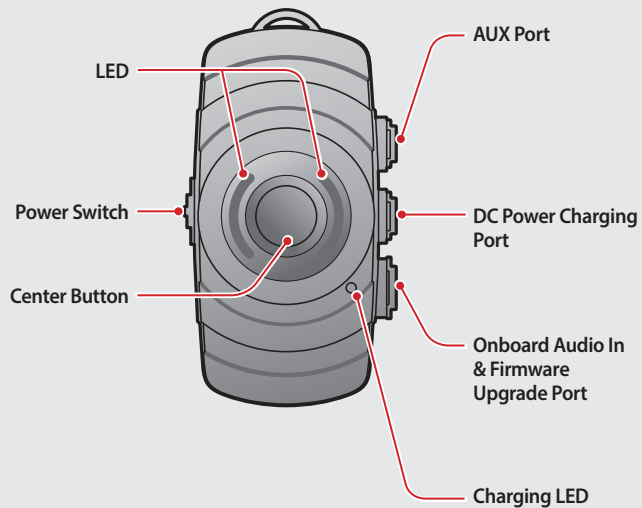


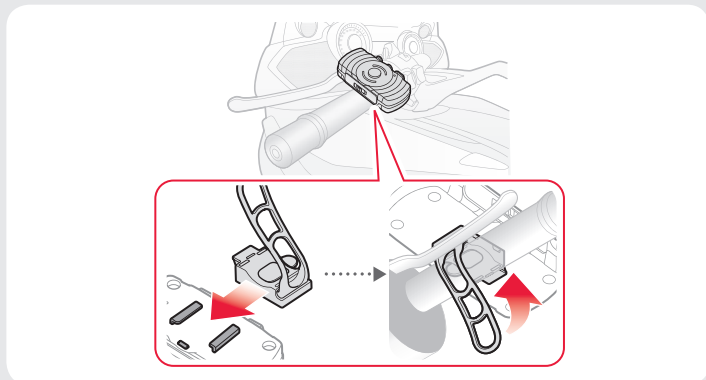
## PREPARATION

### Knowing the FreeWire Layout

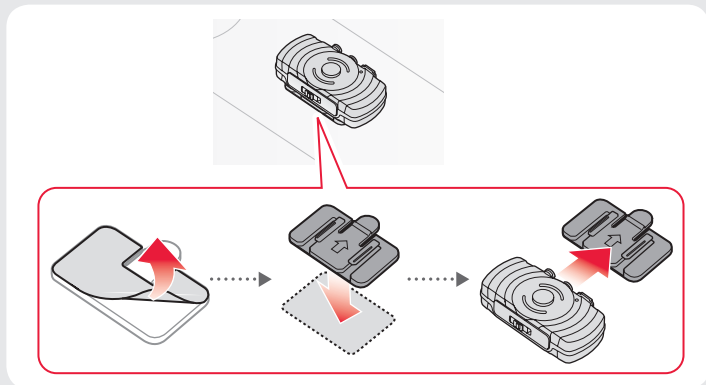


## INSTALLATION

### Installing on the Handlebar

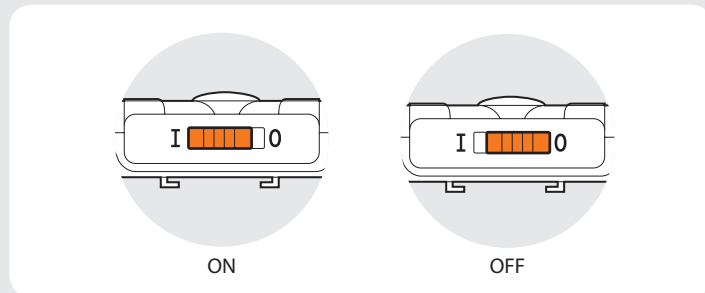


### Placing on the Mounting Cradle



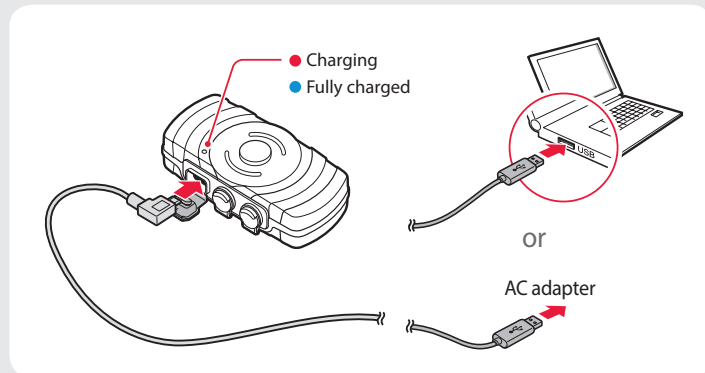
## BASIC OPERATION

### Turning On/Off the FreeWire



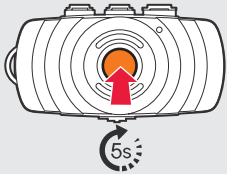
To turn on the FreeWire, slide the Power Switch to I. To turn off, slide the Power Switch to O.

### Charging the FreeWire



## USING THE FREEWIRE

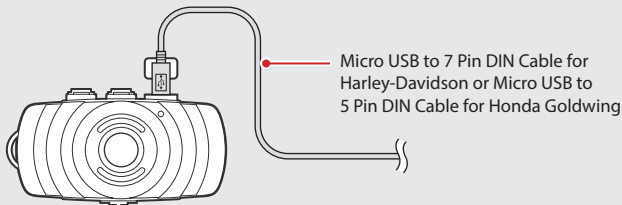
### Pairing with a Sena Bluetooth Headset



Press the **Center Button** for 5 seconds.

- Note**
1. Turn on your Sena Bluetooth headset and enter Mobile Phone Pairing Mode before you enter pairing mode of your FreeWire.
  2. The FreeWire will transit wireless audio signals once it is paired with the headset. If Bluetooth connection is lost, tap the **Center Button** once.

### Connecting with the Onboard Audio System



## TROUBLESHOOTING

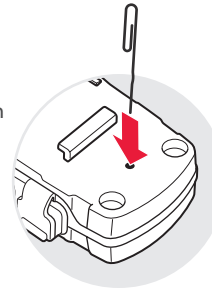
### Factory Reset

If you want to restore the FreeWire to factory default settings, press and hold the **Center Button** for 14 seconds. Tap the **Center Button**. The headset automatically restores the default settings and turns off.

**Note** If you reset your headset paired with your FreeWire to factory default settings, you should reset your FreeWire to factory default settings as well in order to pair them again.

### Fault Reset

If the FreeWire is not working properly for any reason, push the pin-hole Reset button located on the back of the FreeWire while it is powered on.



Sena Technologies, Inc.

[www.sena.com](http://www.sena.com)

Customer Support: [support.sena.com](mailto:support.sena.com)

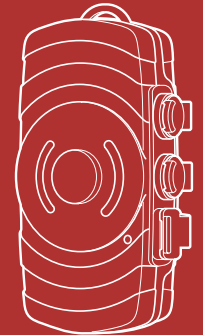
E-mail: [support@sena.com](mailto:support@sena.com)

# SENA

# FREEWIRE

## Quick Start Guide

Bluetooth® CB and Audio Adapter



You can download the **full version of the manual** and view other Sena products at the Sena website: [www.sena.com](http://www.sena.com).